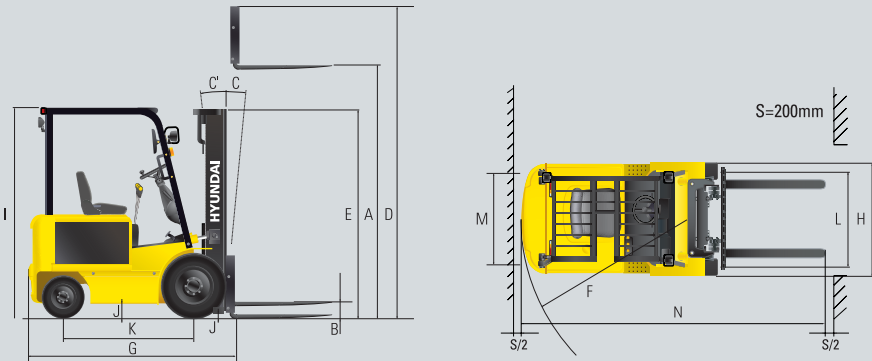


Dimension



Specification

Description	Unit	HBF 20-7		HBF 25-7		HBF 30-7		HBF 32-7			
		48V	36V	48V	36V	48V	36V	48V	36V		
Load Capacity	kg(lb)	2,000(4,000)		2,500(5,000)		3,000(6,000)		3,200(6,500)			
Load Center	mm(in)	500(24)		500(24)		500(24)		500(24)			
Fork	Lifting Speed	Load	mm/sec(fpm)	370(72.8)	330(65)	360	320(63)	270(53.1)	180(35)	260(51.1)	170(33)
		Unload	mm/sec(fpm)	580(114.1)	550(108)	580(114.1)	550(108)	460(90.5)	360(71)	460(90.5)	360(71)
	Lowering Speed	Load	mm/sec(fpm)	500(98.4)		500(98.4)		510(100.4)		510(100.4)	
		Unload	mm/sec(fpm)	450(88.6)		450(88.6)		460(90.5)		460(90.5)	
L x W x T	mm(in)	1050(41.3)x100(3.9)x45(1.8)		1050(41.3)x100(3.9)x45(1.8)		1050(41.3)x125(4.9)x45(1.7)		1050(41.3)x125(4.9)x45(1.7)			
Body	Travel Speed(Unloaded)	km/hr(mph)	15.8(9.8)	11.4(7.0)	15.3(9.5)	11.1(6.9)	15.2(9.4)	11.0(6.8)	14.9(9.2)	10.8(6.7)	
	Gradeability (Loaded)	% (deg)	26.2(14.7)	28.6(15.9)	23.0(12.9)	25.1(14.0)	18.5(10.5)	20.2(11.4)	17.8(10.1)	19.5(11.0)	
Weight (Unloaded)	kg(lb)	3,965(8,741)		4,293(9,464)		4,715(10,395)		4,810(10,604)			
A Max. Lifting Height	mm(in)	3,300(129.9)		3,300(129.9)		3,300(129.9)		3,200(125.9)			
B Free Lifting Height	mm(in)	155(6.1)		155(6.1)		155(6.1)		155(6.1)			
C Tilting (Forward)	% (deg)	10.7(6)		10.7(6)		10.7(6)		10.7(6)			
C' Tilting (Backward)	% (deg)	17.8(10)		17.8(10)		17.8(10)		17.8(10)			
D Max. Height	mm(in)	4,485(176.5)		4,485(176.5)		4,485(176.5)		4,385(172.6)			
E Min. Height	mm(in)	2,175(85.6)		2,175(85.6)		2,190(86.2)		2,190(86.2)			
F Outside Turning Radius Min.	mm(in)	1,960(77.1)		2,000(78.7)		2,235(87.9)		2,250(88.5)			
G Overall Length to fork face	mm(in)	2,267(89.2)		2,322(91.4)		2,507(98.7)		2,527(99.5)			
H Overall Width	mm(in)	1,186(46.7)		1,186(46.7)		1,213(47.7)		1,213(47.7)			
I Overhead Guard Height	mm(in)	2,220(87.4)		2,220(87.4)		2,250(88.6)		2,250(88.6)			
J Ground Clearance	At lowest point	mm(in)	130(5.1)		130(5.1)		145(5.7)		145(5.7)		
	Center of wheel base	mm(in)	130(5.1)		130(5.1)		145(5.7)		145(5.7)		
K Wheel Base	mm(in)	1,420(55.9)		1,420(55.9)		1,580(62.2)		1,580(62.2)			
L Wheel Tread - Front	mm(in)	990(38.9)		990(38.9)		990(38.9)		990(38.9)			
M Wheel Tread - Rear	mm(in)	980(38.5)		980(38.5)		980(38.5)		980(38.5)			
N Right Angle Stacking Aisle Width with pallets 1,000 x 1,200 [L x W]	mm(in)	3,425(134.8)		3,465(136.4)		3,700(145.6)		3,715(146.2)			
ELECTRICAL MOTOR	Drive motor (Series)	kW(Hp)	10.3(13.8)		10.3(13.8)		10.3(13.8)		10.3(13.8)		
	Pump motor (Series)	kW(Hp)	15.5(20.8)	11.0(14.8)	15.5(20.8)	11.0(14.8)	15.5(20.8)	11.0(14.8)	15.5(20.8)	11.0(14.8)	
BATTERY	Battery Weight	Min	kg(lb)	1,040(2,292)		1,100(2,425)		1,320(2,910)		1,320(2,910)	
		Max	kg(lb)	1,300(2,870)		1,300(2,870)		1,500(3,300)		1,500(3,300)	
Battery Compartment Size (L x W x H)		mm(in)	1,066(42)x796(31.4)x537(21.2)		1,066(42)x796(31.4)x537(21.2)		1,066(42)x990(39)x537(21.2)		1,066(42)x990(39)x537(21.2)		
TIRE & WHEELS	With load front/rear	kg(lb)	5,153/812(11,360/1,790)		5,940/850(13,095/1,873)		6,788/927(14,964/2,043)		7,087/927(15,623/2,043)		
	Without load front/rear	kg(lb)	1,795/2,170(3,957/4,020)		1,745/2,545(3,847/5,610)		1,958/2,756(4,316/6,075)		1,935/2,875(4,265/6,338)		
	Tire type (SE=Super Elastic, P=Pneumatic)	-	SE,P		SE,P		SE,P		SE,P		
Number front/rear		-	2/2		2/2		2/2		2/2		
Size- front (Pneumatic)		-	7.00-12(12PR)		7.00-12(12PR)		28x9-15(12PR)		28x9-15(12PR)		
Size- rear (Pneumatic)		-	18x7-8(16PR)		18x7-8(16PR)		18x7-8(16PR)		18x7-8(16PR)		
CONTROLLER TYPE	Electrical Drive	-	DC Series		DC Series		DC Series		DC Series		
	Load Handling	-	DC Series		DC Series		DC Series		DC Series		

HYUNDAI BATTERY FORKLIFTS

HBF 20/25/30/32 -7

Model	: HBF20-7 / HBF25-7 / HBF30-7 / HBF32-7
Load Capacity, kg (lb)	: 2,000(4,000) / 2,500(5,000) / 3,000(6,000) / 3,200(6,500)
Travel Speed(Unloaded), km/hr (mph)	: 15.8(9.8) / 15.3(9.5) / 15.2(9.4) / 14.9(9.2)
Max. Lifting Height, mm (in)	: 3,300(129.9) / 3,300(129.9) / 3,300(129.9) / 3,200(125.9)



■ Photo may include optional equipment.

The HBF-7 Series

Designed with a durable frame and built to offer excellent stability and a smooth ride,

HBF-7 Series trucks are real workhorses.

From external or internal loading and unloading of trucks to

work yard for the material industry,

whatever requirement arise, you can count on

HBF-7 Series truck to lift your business to greater heights.



■ Photo may include optional equipment.

Superior Power & Optimal Performance

Smooth running, efficient and ergonomically designed, HBF20/25/30/32-7 series are built to meet your needs.

■ Photo may include optional equipment.



High Quality Traction Motor & Drive Axle

High quality Prestolite DC motor guarantees reliability confidence. Optimized motor design makes the low noise level possible. Temperature sensor prevents over heating and ensures long lifetime of the motor.



Anti-rollback System, Faster Travel Speed and Gradeability

SEVCON's anti-rollback system provides safe ramp operation plus exceptional ramp start capabilities. The powerful high-output traction motor provides greater acceleration, better gradeability and faster travel speed on any tough terrain or slope.



Travel Speed (MAX)

Model	km/hr(mph)
HBF20-7	15.8(9.8)
HBF25-7	15.3(9.5)
HBF30-7	15.2(9.4)
HBF32-7	14.9(9.2)

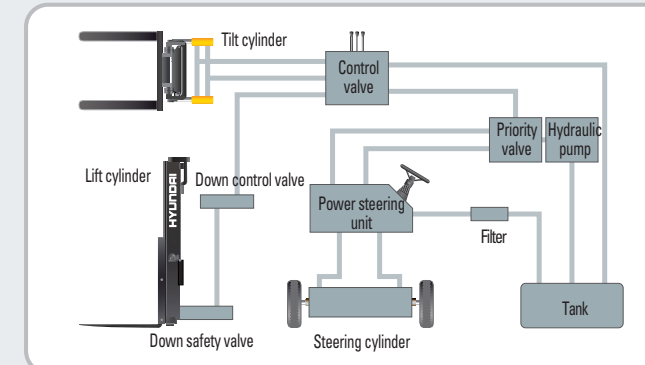
Gradeability (MAX)

Model	%(deg)
HBF20-7	26.2(14.7)
HBF25-7	23.0(12.9)
HBF30-7	18.5(10.5)
HBF32-7	17.8(10.1)



Fork Safety Features

When the forks are being lowered, a down-control valve maintains the controlled speed. The down-safety valve prevents forks from dropping down in case of sudden damage of the hydraulic line.



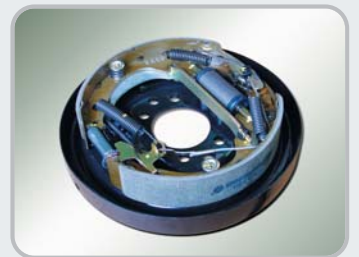
State-of-the-art Hydraulic System

The latest large-capacity hydraulic system reacts quickly during operation and the low noise control valve increases both efficiency and durability.



Increased Mast Tilting Angle

Utilizing the mast tilting angle of 6 degrees forward and 10 degrees backward, the operator can rapidly perform loading and unloading jobs safely.



Clean and Reliable Brakes

The adoption of DUO-SERVO type drum brake improves braking performance. A self-adjusting function maintains proper brake adjustment to compensate for lining wear.



Smooth Steering

Installation of the port in the steering line makes it possible to measure and adjust the steering pressure.



Side Roller Bearing

The adoption of internal side roller bearing prevents trembling and minimizes gaps in carriage.

Comfortable Operation

A design based on human engineering relieves fatigue and increases operator's efficiency.

■ Photo may include optional equipment.



Adjustable Steering Wheel

The steering wheel can be adjusted by a lever on the right-hand side for the most comfortable operating position.



Easy Control Transmission Lever

The forward and reverse control switch enables one finger operation so that the operator's other hand can remain on the steering wheel, minimizing arm fatigue.



Multi-functional Switch

The integrated multi-functional switch lever enables the driver to operate lights and horn conveniently.



Prompt Response of Operating Control Levers

Minimal operator's effort is required for precise, safe and productive control.



New High Visibility for Safe Operation

The operator is able to work with increased safety and accuracy due to a wider mast view.



Perfect Fit Against Long Time Work

An ergonomically designed operator's compartment enables the driver to select the most comfortable working position for increased productivity.



Optimum Pedal Position & Non-slip Mat

Based on human engineering, the accelerator, brake and inching pedals are optimally positioned for convenience while operating the equipment.

Easily Adjustable Suspension Seat

An attractive and adjustable seat, based on a human engineering design, provides greater comfort, safety and durability.

■ Options : Seat belt, Arm rest, Hip restraint



Self - diagnostic LCD Monitor

The LCD monitor has a back-light system to provide a clear view of the system's operation in all environments. The monitor provides information about operation error, system fault, battery level, hour meter plus other various functions.

Console Box & Cup Holder

Additional storage spaces are located inside the operating space for operator's convenience.

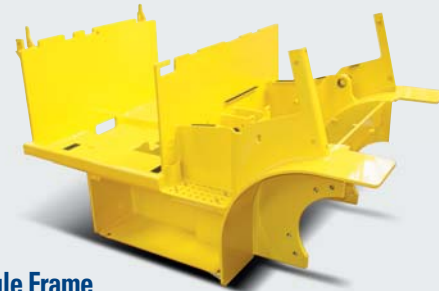


High Durability & Simple Arrangement

An ideal arrangement of component parts ensures easy access and convenience for maintenance.



■ Photo may include optional equipment.



Heavy Duty Single Frame

Heavy duty single type frame, designed on the basis of accurate structural analysis, guarantees durability and safety.



Strong Overhead Guard

The safety overhead guard meets EEC and ANSI regulations and protects the operator during hazardous work.



Parking Brake

Ratchet type parking brake requires less effort from the operator to set.



Large Footboard & Hand Grip

Wide "open" step and large hand grip offer convenience and safety when entering and exiting the truck.



Rear Safety Lamp

Rear combination lamps with turn signal lamps, rear lights, tail lamp and brake lights are positioned for high visibility to ensure safety.

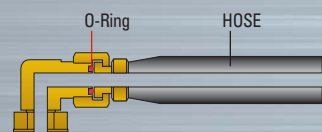
High Technology SEVCON Controller

The efficient, almost noiseless, 16Mhz (high frequency) SEVCON controller provides smooth operation and protection for low & high voltage, overheating and fault recording.



Easy to Hook Towing Pin

Adoption of the towing pin gives easy hooking.



ORFS (O-Ring Face Seal)

ORFS type hose prevents the leaking of hydraulic oil.

Easy Maintenance & Serviceability

Battery change is easy with a swing-up compartment and a slotted overhead guard. Opening and closing of the battery cover is made easy with a gas-spring assisted cylinder.



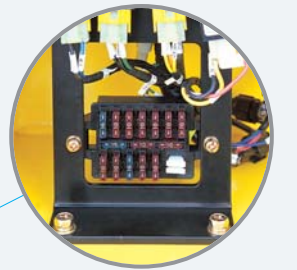
Battery Disconnect Lever



Gas Spring Type Battery Cover



Easy to Check Brake Oil Level



Concentrated Fuse Box for Easy Inspection



Easy Battery Replacement



Quiet and Durable Hydraulic Pump & Motor



Reliable MOSFET Type Controller



High Visibility Headlights & Rear Work Light



DC-DC Converter

DC-DC converter, satisfied with UL & CE, prevents from short circuit, overload and reverse polarity.

■ Photo may include optional equipment.



Mast Specification (HBF 20/25-7)

Mast Type	Maximum Fork Height mm(in)		Overall Height (Lowered) mm(in)		Free Lift mm(in)				Fwd. Tilt Angle (deg)	Bwd. Tilt Angle (deg)	Truck Weight (Unloaded) kg(lb)		Load Capacity at 500mm LC (24in LC) kg(lb)				
	HBF20-7	HBF25-7	HBF20-7	HBF25-7	Without Load Backrest		With Std Load Backrest				HBF20-7	HBF25-7	HBF20-7	HBF25-7			
					HBF20-7	HBF25-7	HBF20-7	HBF25-7									
2 / Stage limited free lift	V300	3000(118.1)	3000(118.1)	2025(79.7)	2025(79.7)	155(6.1)	155(6.1)	155(6.1)	155(6.1)	6	6	10	10	3946(8699)	4274(9422)	2000(4000)	2500(5000)
	* V330	3300(129.9)	3300(129.9)	2175(85.6)	2175(85.6)	155(6.1)	155(6.1)	155(6.1)	155(6.1)	6	6	10	10	3965(8741)	4293(9464)	2000(4000)	2500(5000)
	V350	3500(137.5)	3500(137.5)	2275(89.6)	2275(89.6)	155(6.1)	155(6.1)	155(6.1)	155(6.1)	6	6	10	10	4013(8847)	4346(9581)	2000(4000)	2460(4950)
	V370	3700(145.7)	3700(145.7)	2425(95.5)	2425(95.5)	155(6.1)	155(6.1)	155(6.1)	155(6.1)	6	6	10	10	4034(8893)	4367(9627)	2000(4000)	2420(4900)
	V400	4000(157.4)	4000(157.4)	2575(101.4)	2575(101.4)	155(6.1)	155(6.1)	155(6.1)	155(6.1)	6	6	10	10	4055(8940)	4388(9674)	2000(4000)	2350(4800)
	V430	4300(169.3)	4300(169.3)	2725(107.3)	2725(107.3)	155(6.1)	155(6.1)	155(6.1)	155(6.1)	6	6	6	6	4103(9045)	4436(9780)	1975(4000)	2300(4600)
	V450	4500(177.2)	4500(177.2)	2875(113.2)	2875(113.2)	155(6.1)	155(6.1)	155(6.1)	155(6.1)	6	6	6	6	4138(9123)	4471(9857)	1925(3900)	2260(4500)
	V470	4700(185.0)	4700(185.0)	2975(117.1)	2975(117.1)	155(6.1)	155(6.1)	155(6.1)	155(6.1)	6	6	6	6	4148(9145)	4481(9879)	1900(3800)	2200(4400)
V500	5000(196.9)	5000(196.9)	3125(123.0)	3125(123.0)	155(6.1)	155(6.1)	155(6.1)	155(6.1)	6	6	6	6	4170(9193)	4503(9927)	1850(3750)	2150(4300)	
2-Stage full free lift	VF300	3000(118.1)	3000(118.1)	2025(79.7)	2025(79.7)	1377(54.2)	1377(54.2)	845(33.3)	845(33.3)	6	6	6	6	4030(8884)	4363(9619)	2000(4000)	2500(5000)
	VF330	3300(129.9)	3300(129.9)	2175(85.6)	2175(85.6)	1527(60.1)	1527(60.1)	994(39.2)	994(39.2)	6	6	6	6	4063(8957)	4396(9691)	2000(4000)	2500(5000)
3 / Stage full free lift	TF370	3700(145.7)	3700(145.7)	1825(71.9)	1825(71.9)	1177(46.3)	1177(46.3)	645(25.4)	645(25.4)	6	6	6	6	4109(9059)	4442(9793)	2000(4000)	2350(4700)
	TF400	4000(157.4)	4000(157.4)	1925(75.8)	1925(75.8)	1277(50.3)	1277(50.3)	745(29.3)	745(29.3)	6	6	6	6	4132(9109)	4465(9843)	1950(4000)	2270(4600)
	TF430	4300(169.3)	4300(169.3)	2025(79.7)	2025(79.7)	1377(54.2)	1377(54.2)	845(33.3)	845(33.3)	6	6	6	6	4151(9151)	4484(9885)	1900(3850)	2250(4500)
	TF450	4500(177.2)	4500(177.2)	2125(83.7)	2125(83.7)	1477(58.1)	1477(58.1)	945(37.2)	945(37.2)	6	6	6	6	4170(9193)	4503(9927)	1875(3800)	2200(4400)
	TF470	4700(185.0)	4700(185.0)	2175(85.6)	2175(85.6)	1527(60.1)	1527(60.1)	995(39.2)	995(39.2)	6	6	6	6	4191(9239)	4524(9974)	1850(3750)	2150(4300)
	TF500	5000(196.9)	5000(196.9)	2275(89.6)	2275(89.6)	1627(64.1)	1627(64.1)	1095(43.1)	1095(43.1)	6	6	6	6	4214(9290)	4547(10024)	1800(3650)	2100(4200)
	TF550	5500(216.5)	5500(216.5)	2475(97.4)	2475(97.4)	1827(71.9)	1827(71.9)	1295(51.0)	1295(51.0)	6	6	6	6	4252(9374)	4585(10108)	1720(3500)	1850(3950)
	TF600	6000(236.2)	6000(236.2)	2675(105.3)	2675(105.3)	2027(79.8)	2027(79.8)	1495(58.9)	1495(58.9)	6	6	6	6	4317(9517)	4650(10251)	1270(2650)	1250(2650)
	TF650	6500(255.9)	6500(255.9)	2875(113.2)	2875(113.2)	2227(87.7)	2227(87.7)	1695(66.7)	1695(66.7)	3	3	3	3	4356(9603)	4689(10337)	950(1950)	1200(2550)
	TF700	7000(275.6)	7000(275.6)	3075(121.1)	3075(121.1)	2427(95.6)	2427(95.6)	1895(74.6)	1895(74.6)	3	3	3	3	4393(9685)	4726(10419)	700(1400)	1120(2400)

* Standard

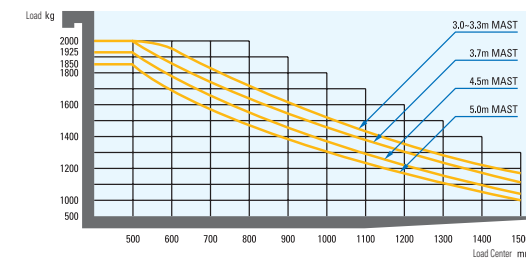
Mast Specification (HBF 30/32-7)

Mast Type	Maximum Fork Height mm(in)		Overall Height (Lowered) mm(in)		Free Lift mm(in)				Fwd. Tilt Angle (deg)	Bwd. Tilt Angle (deg)	Truck Weight (Unloaded) kg(lb)		Load Capacity at 500mm LC (24in LC) kg(lb)				
	HBF30-7	HBF32-7	HBF30-7	HBF32-7	Without Load Backrest		With Std Load Backrest				HBF30-7	HBF32-7	HBF30-7	HBF32-7			
					HBF30-7	HBF32-7	HBF30-7	HBF32-7									
2 / Stage limited free lift	V290	2900(114.2)	2040(80.3)	2040(80.3)	155(6.1)	155(6.1)	155(6.1)	155(6.1)	6	6	10	10	4693(10346)	4810(10604)	3000(6000)	3200(6500)	
	V300	3000(118.1)	2040(80.3)	2040(80.3)	155(6.1)	155(6.1)	155(6.1)	155(6.1)	6	6	10	10	4693(10346)	4810(10604)	3000(6000)	3200(6500)	
	* V320	3200(126.0)	2190(86.2)	2190(86.2)	155(6.1)	155(6.1)	155(6.1)	155(6.1)	6	6	10	10	4715(10395)	4810(10604)	3000(6000)	3200(6500)	
	* V330	3300(129.9)	2190(86.2)	2190(86.2)	155(6.1)	155(6.1)	155(6.1)	155(6.1)	6	6	10	10	4715(10395)	4810(10604)	3000(6000)	3200(6500)	
	V340	3400(133.9)	2290(90.2)	2290(90.2)	155(6.1)	155(6.1)	155(6.1)	155(6.1)	6	6	10	10	4739(10448)	4834(10657)	3000(6000)	3200(6500)	
	V350	3500(137.8)	2290(90.2)	2290(90.2)	155(6.1)	155(6.1)	155(6.1)	155(6.1)	6	6	10	10	4739(10448)	4834(10657)	3000(6000)	3200(6500)	
	V370	3700(145.7)	2440(96.1)	2440(96.1)	155(6.1)	155(6.1)	155(6.1)	155(6.1)	6	6	10	10	4762(10498)	4857(10708)	3000(6000)	3120(6400)	
	V400	4000(157.4)	2590(102.0)	2590(102.0)	155(6.1)	155(6.1)	155(6.1)	155(6.1)	6	6	10	10	4783(10545)	4878(10754)	2950(5950)	3050(6300)	
	V430	4300(169.3)	2740(107.9)	2740(107.9)	155(6.1)	155(6.1)	155(6.1)	155(6.1)	6	6	6	6	4832(10653)	4927(10862)	2850(5750)	2980(6100)	
	V450	4500(177.2)	2890(113.8)	2890(113.8)	155(6.1)	155(6.1)	155(6.1)	155(6.1)	6	6	6	6	4869(10734)	4964(10944)	2800(5650)	2900(5900)	
2-Stage full free lift	V470	4700(185.0)	2990(117.7)	2990(117.7)	155(6.1)	155(6.1)	155(6.1)	155(6.1)	6	6	6	6	4879(10756)	4974(10966)	2770(5600)	2850(5850)	
	V500	5000(196.9)	3140(123.6)	3140(123.6)	155(6.1)	155(6.1)	155(6.1)	155(6.1)	6	6	6	6	4901(10805)	4996(11014)	2700(5450)	2800(5800)	
	VF295	2950(116.1)	2040(80.3)	2040(80.3)	1314(51.7)	1314(51.7)	860(33.9)	860(33.9)	6	6	6	6	4744(10459)	4839(10668)	3000(6000)	3200(6500)	
	VF300	3000(118.1)	2040(80.3)	2040(80.3)	1314(51.7)	1314(51.7)	860(33.9)	860(33.9)	6	6	6	6	4744(10459)	4839(10668)	3000(6000)	3200(6500)	
	VF325	3250(128.0)	2190(86.2)	2190(86.2)	1464(57.6)	1464(57.6)	1010(39.8)	1010(39.8)	6	6	6	6	4777(10531)	4872(10741)	3000(6000)	3200(6500)	
	VF330	3300(129.9)	2190(86.2)	2190(86.2)	1464(57.6)	1464(57.6)	1010(39.8)	1010(39.8)	6	6	6	6	4777(10531)	4872(10741)	3000(6000)	3200(6500)	
	3 / Stage full free lift	TF370	3700(145.7)	1840(72.4)	1840(72.4)	1114(43.9)	1114(43.9)	660(26.0)	660(26.0)	6	6	6	6	4850(10692)	4945(10902)	2920(5900)	3050(6200)
		TF400	4000(157.4)	1940(76.4)	1940(76.4)	1214(47.8)	1214(47.8)	760(29.9)	760(29.9)	6	6	6	6	4873(10743)	4968(10952)	2850(5800)	2980(6100)
		TF430	4300(169.3)	2040(80.3)	2040(80.3)	1314(51.7)	1314(51.7)	860(33.9)	860(33.9)	6	6	6	6	4890(10780)	4985(10990)	2780(5600)	2900(5900)
		TF450	4500(177.2)	2140(84.3)	2140(84.3)	1414(55.7)	1414(55.7)	960(37.8)	960(37.8)	6	6	6	6	4906(10816)	5001(11025)	2730(5500)	2850(5800)
TF470		4700(185.0)	2190(86.2)	2190(86.2)	1464(57.6)	1464(57.6)	1010(39.8)	1010(39.8)	6	6	6	6	4926(10860)	5021(11069)	2650(5300)	2770(5750)	
TF500		5000(196.9)	2290(90.2)	2290(90.2)	1564(61.6)	1564(61.6)	1110(43.7)	1110(43.7)	6	6	6	6	4948(10908)	5043(11118)	2350(4900)	2470(5150)	
TF550		5500(216.5)	2490(98.0)	2490(98.0)	1764(69.4)	1764(69.4)	1310(51.6)	1310(51.6)	6	6	6	6	4986(10992)	5081(11201)	2150(4400)	2280(4800)	
TF600		6000(236.2)	2690(105.9)	2690(105.9)	1964(77.3)	1964(77.3)	1510(59.4)	1510(59.4)	6	6	6	6	5050(11133)	5145(11343)	1850(3900)	1980(4150)	
TF650		6500(255.9)	2890(113.8)	2890(113.8)	2164(85.2)	2164(85.2)	1710(67.3)	1710(67.3)	3	3	3	3	5088(11217)	5183(11426)	1550(3200)	1600(3400)	
TF700		7000(275.6)	3090(121.7)	3090(121.7)	2364(93.1)	2364(93.1)	1910(75.2)	1910(75.2)	3	3	3	3	5123(11294)	5218(11504)	1350(2850)	1400(3100)	

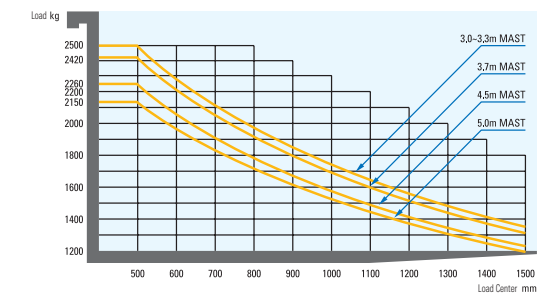
* Standard

Load Capacity

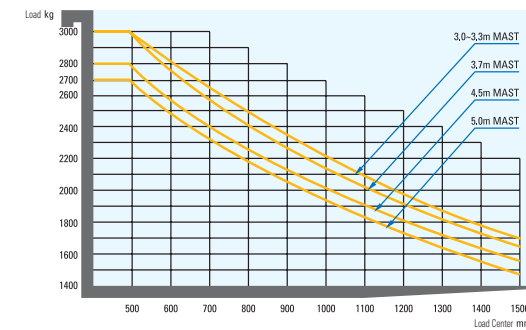
HBF20-7



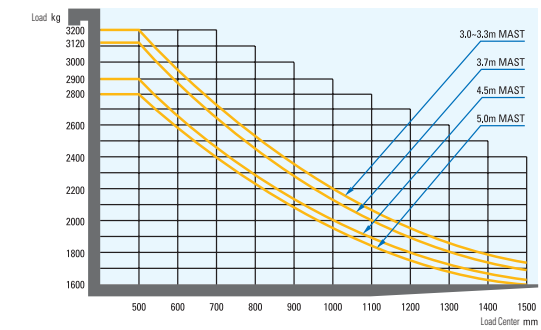
HBF25-7



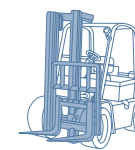
HBF30-7



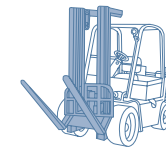
HBF32-7



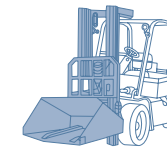
Various Attachments



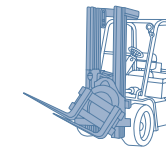
Side Shift



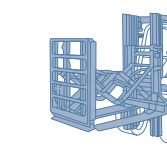
Hinged Fork



Hinged Bucket



Rotating Fork



Push Pull